

**LAND CERTIFICATE NO. 44843
COPY**

Land Certificate No. 44843 Tulcea

A. Part I. Property description

LAND within the built-up area

Address: Loc. Tulcea, Str. GRIGORE ANTIPA, Jud. Tulcea

Item no.	Cadastral number Topographic	Surface* (sqm)	Observations / References
A1	44843	3,479	Unfenced land;

B. Part II. Owners and documents

Entries regarding property rights and other real rights		References
60309 / 19/06/2019		
Normative Act no. 1360, from 27/10/2001 issued by the GOVERNMENT OF ROMANIA; Administrative Act no. 110, dated 26/04/2018 issued by the TULCEA LOCAL COUNCIL; Administrative Act no. 7498, from 07/06/2019 issued by the TULCEA LOCAL COUNCIL; Administrative Act no. 133, dated 30/10/2008 issued by the TULCEA LOCAL COUNCIL; Administrative Act no. 229574, dated 05/27/2019 issued by TULCEA MUNICIPALITY TOWN HALL;		
B1	Tabulation, PROPERTY right, acquired by law, current share 1/1, initial share 1/1	A1
1) TULCEA MUNICIPALITY, CIF (Fiscal Identification Code): 4321429, public domain		

C. Part III. ENCUMBRANCES.

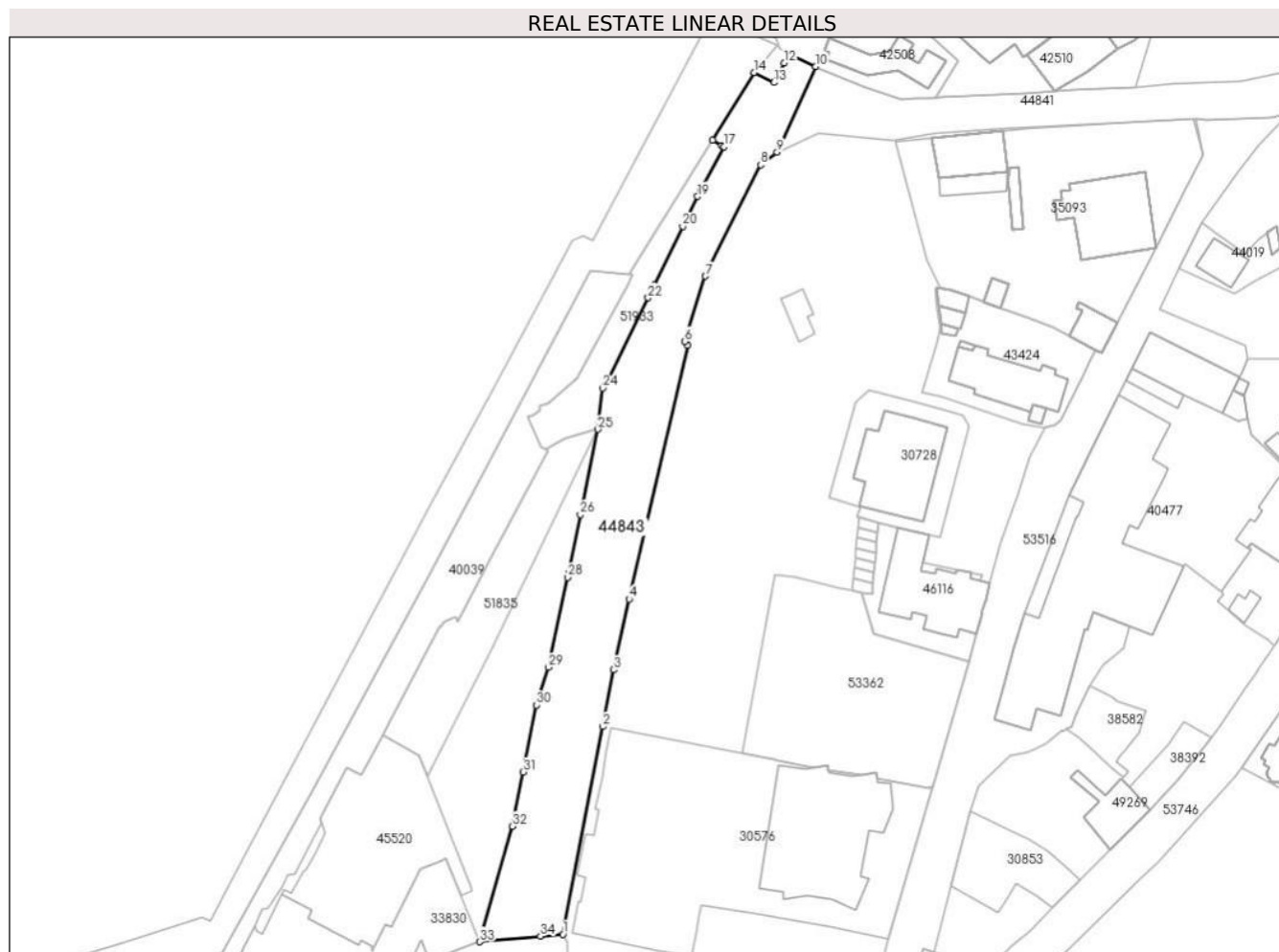
Entries regarding dismemberment of property rights, real rights of guarantee and encumbrances	References
NOT EXISTING	

Annex No. 1 To Part I

Land

Cadastral no.	Surface (sqm)*	Observations / References
44843	3,479	

* The surface is determined in the Stereo 70 projection plane.



Land related data

Item no.	Usage category	Land within the built-up area	Surface (sqm)	Strip land	Lot	Topographical no.	Observations / References
1	road	YES	3,479	-	-	-	

Segments length

1) The segment length values are obtained from the plan projection.

Start point	End point	Segment length (**) (m)	Start point	End point	Segment length (**) (m)
1	2	52,468	2	3	14,335
3	4	17,961	4	5	64,568
5	6	1,287	6	7	17,004
7	8	30,837	8	9	5,162
9	10	23,265	10	11	7,454
11	12	2,622	12	13	5,476

Start point	End point	Segment length (** (m)
13	14	5,511
15	16	2,612
17	18	12,291
19	20	8,289
21	22	3,554
23	24	1,362
25	26	21,682
27	28	1,172
29	30	9,828
31	32	13,757
33	34	15,109

Start point	End point	Segment length (** (m)
14	15	19,715
16	17	0,687
18	19	1,665
20	21	16,098
22	23	23,767
24	25	10,247
26	27	14,64
28	29	22,833
30	31	16,91
32	33	29,776
34	1	5,578

** Segment lengths are determined in the Stereo 70 projection plane and are rounded to 1 millimeter.

*** The distance between the points is made up of cumulative segments that are smaller than the value of 1 millimeter.